



Facts

Acreage	11
County	Bexar
State	Texas
Listing Price	\$1,200,000.00
Listing #	1204341

11+- ACRES SURVEYED OUT OF 15.34 ACRES WITH 40 FT. EASEMENT FROM SHAENFIELD ROAD.

EXCELLENT LOCATION! LOCATED IN BEXAR COUNTY SO NOT ZONED.

EXCELLENT LOCATION NEAR 1604. UTILITIES ARE PRESENT AT THE BUILDING ON THE FRONT ACREAGE SELLER WILL RETAIN.

THE SELLERS ARE RETAINING THE FRONTAGE AND ARE IN THE FIREWORKS BUSINESS. THIS PROPERTY WILL BE RESCRICTED AGAINST FUTURE SALE OF FIREWORKS.

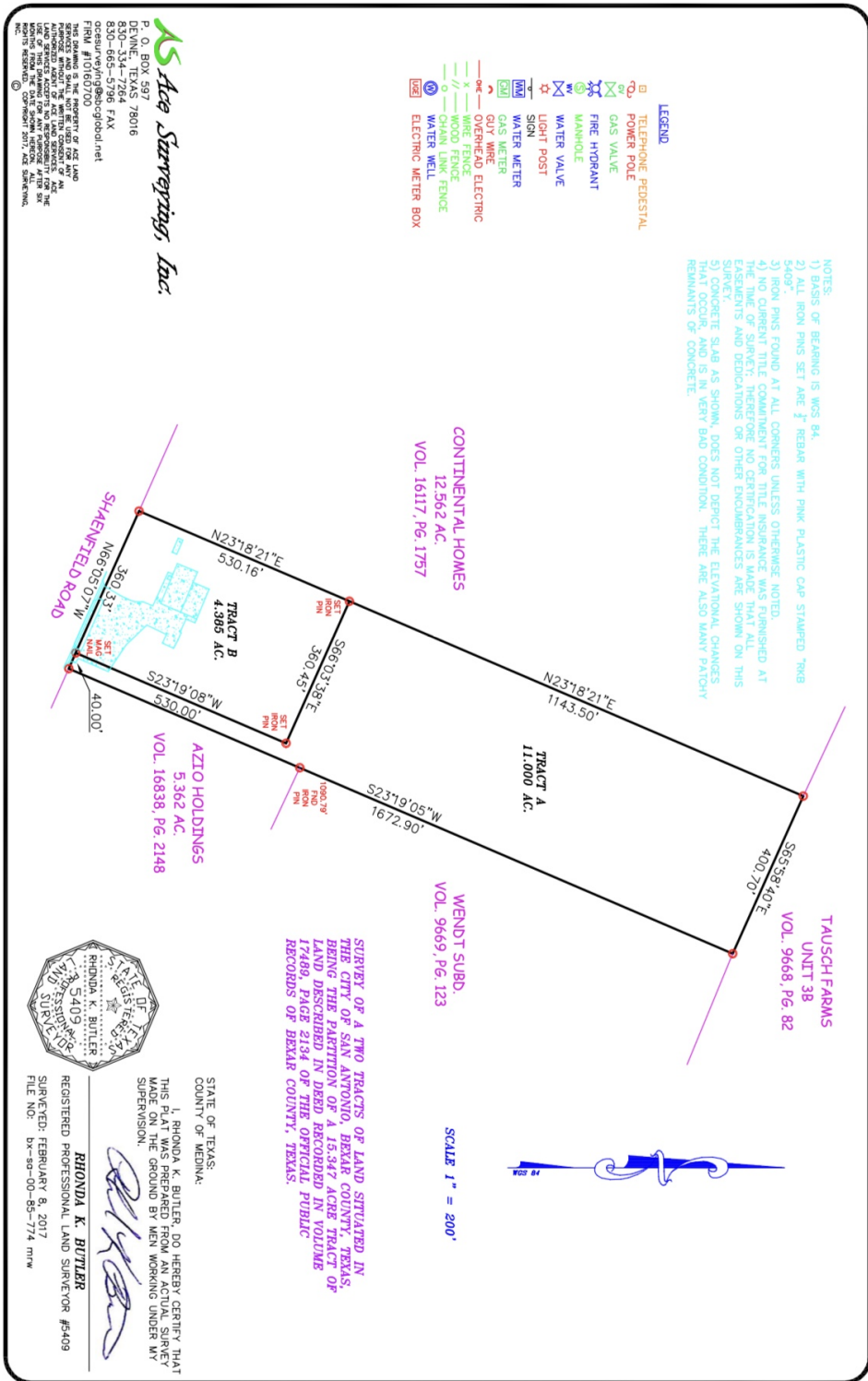
Gallery



Gallery



Area Maps



Area Maps



Area Maps

